



# STUDENTS' PERCEPTION OF PATHOLOGY IN EVERYDAY MEDICAL PRACTICE

Martina Botic, Ivan Zaletel, Jovan Jevtic

Faculty of Medicine, University of Belgrade

# IS MODERN PATHOLOGY ATTRACTIVE (AND WHY)?

- Complex medical specialty



Human Pathology (2011) 42, 802–807



ELSEVIER

Human  
PATHOLOGY

[www.elsevier.com/locate/humpath](http://www.elsevier.com/locate/humpath)

Education in pathology

## Residency choices by graduating medical students: why not pathology?

Tawny Hung MD<sup>a</sup>, Sandra Jarvis-Selinger PhD<sup>b</sup>, Jason C. Ford MD, FRCP(C)<sup>a,c,\*</sup>

- It is not visible in clinical practice
- Medicine attracts extroverts
- Influences from mentors, family, friends, and teachers in a career choice

# IS MODERN PATHOLOGY ATTRACTIVE (AND WHY)?

Career specialty choices of UK medical graduates of 2015 compared with earlier cohorts: questionnaire surveys

Trevor William Lambert, Fay Smith, Michael J Goldacre

Lambert TW, *et al. Postgrad Med J* 2018;**94**:191–197.

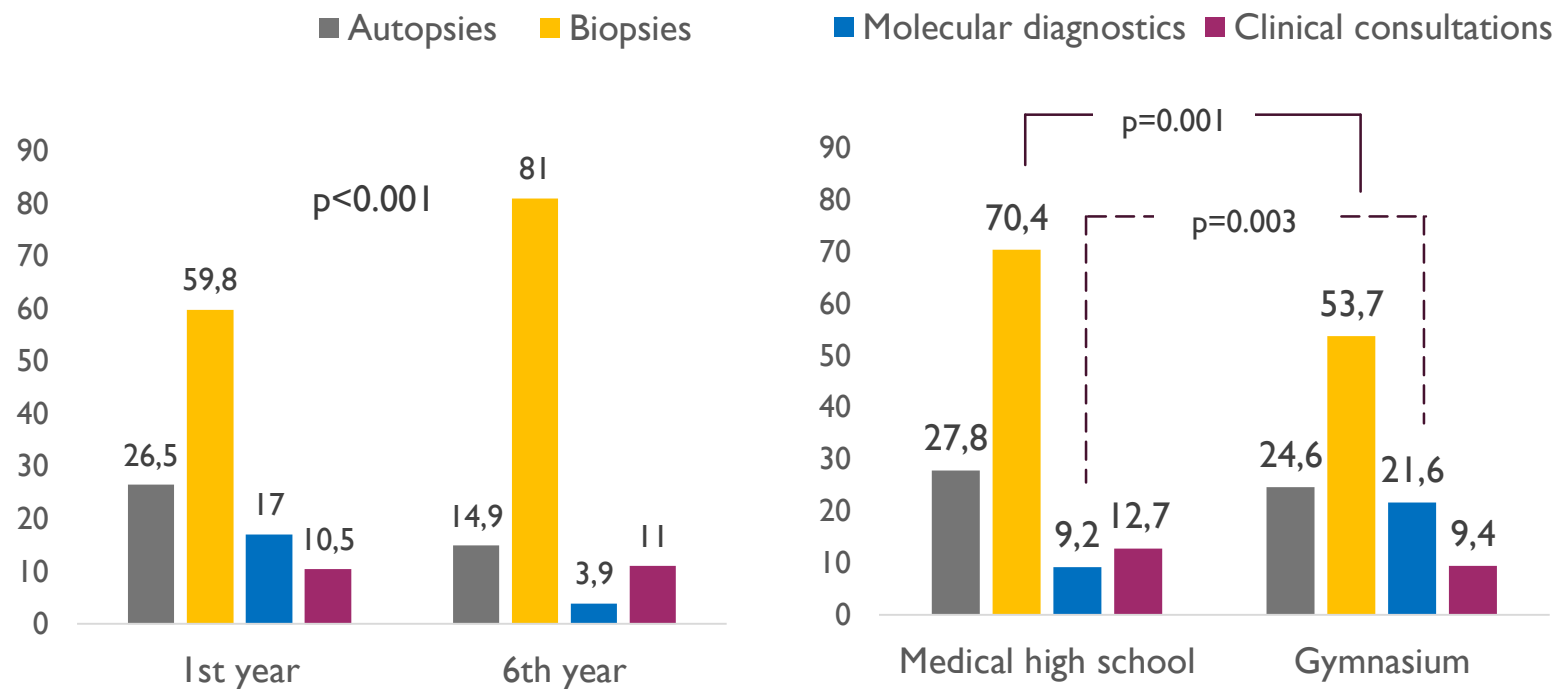
**Table 3** Numbers and percentages of doctors who gave each specialty as their first choice of long-term career: UK medical graduates of 2015, 2012, 2009, 2008 and 2005 surveyed 1 year after graduation: detailed specialty breakdown

Grouped/individual specialty	Graduation year (Numbers)			Graduation year (%)		
	2005, 2008 and 2009 (N=8537)	2012 (N=2313)	2015 (N=3040)	2005, 2008 and 2009 (N=8537)	2012 (N=2313)	2015 (N=3040)
<b>Pathology</b>	<b>228</b>	<b>67</b>	<b>97</b>	<b>2.7</b>	<b>2.9</b>	<b>3.2</b>
Forensic medicine	16	0	5	0.2	0.0	0.2
General pathology	22	4	8	0.3	0.2	0.3
Genetics	25	10	9	0.3	0.4	0.3
Haematology	101	35	46	1.2	1.5	1.5
Histopathology	27	7	12	0.3	0.3	0.4
Immunology	7	3	7	0.1	0.1	0.2
Microbiology	36	8	12	0.4	0.3	0.4

# SURVEY

- Students:
  - 1<sup>st</sup> year - 400
  - 6<sup>th</sup> year - 336
- High school:
  - Gymnasium – 256 (64%)
  - Medical high school - 142 (35.5%) f
- Students who worked as teaching assistants (TA)
  - Department of histology and embryology - 52 (15.5%)
  - Department of pathology - 21 (6.3%).

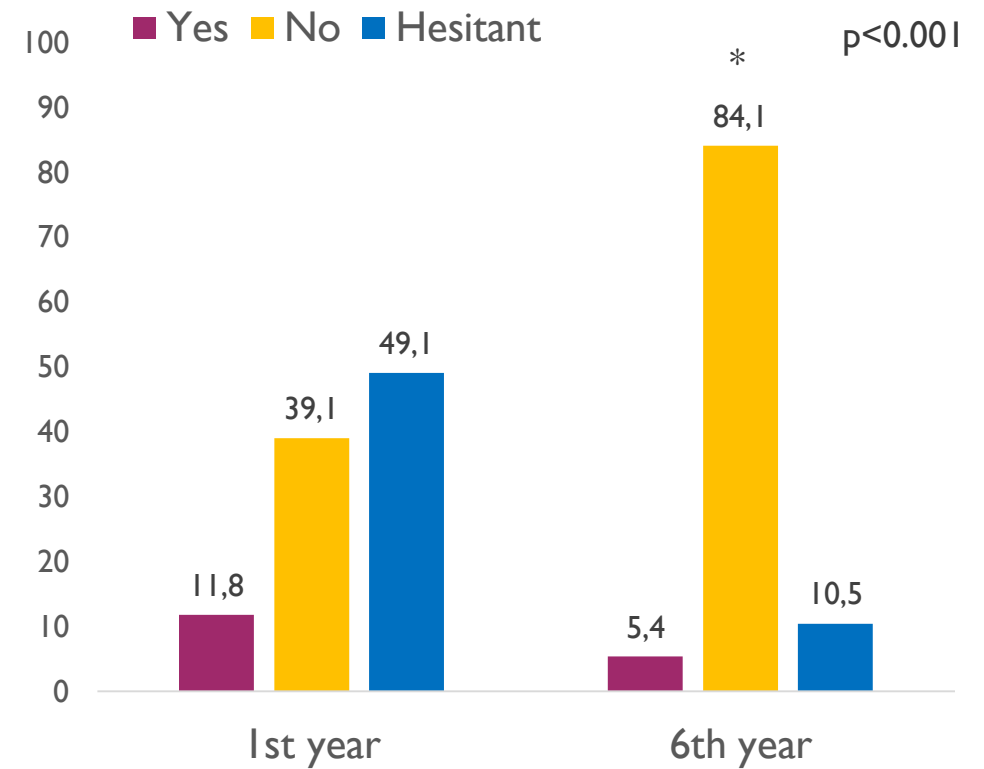
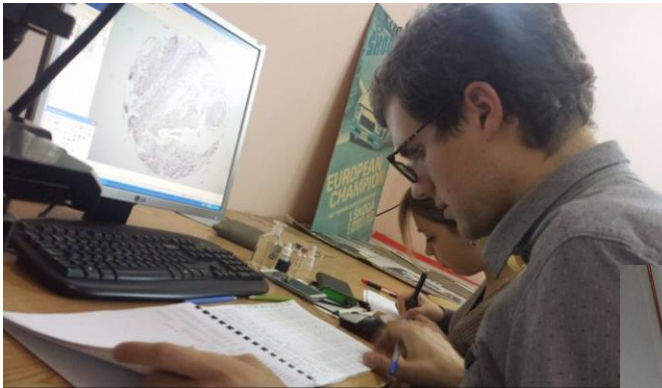
# WHAT ARE THE IMPORTANT PARTS OF EVERYDAY PRACTICE?



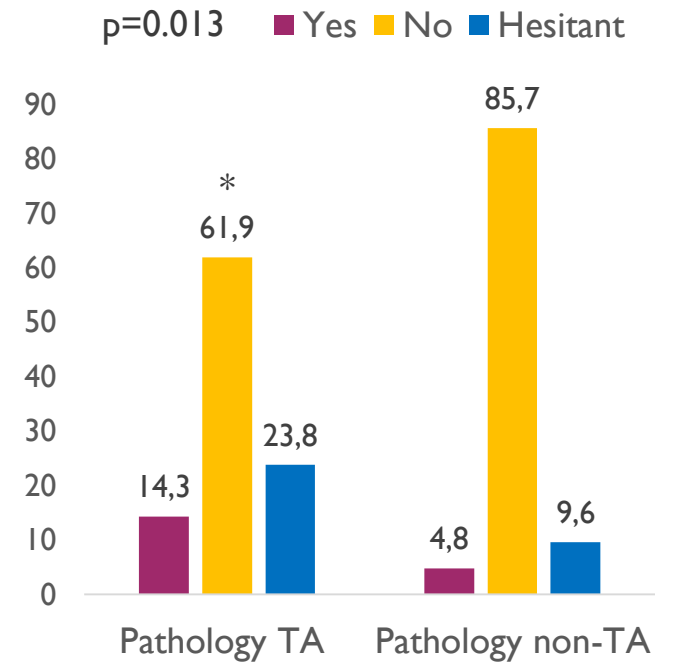
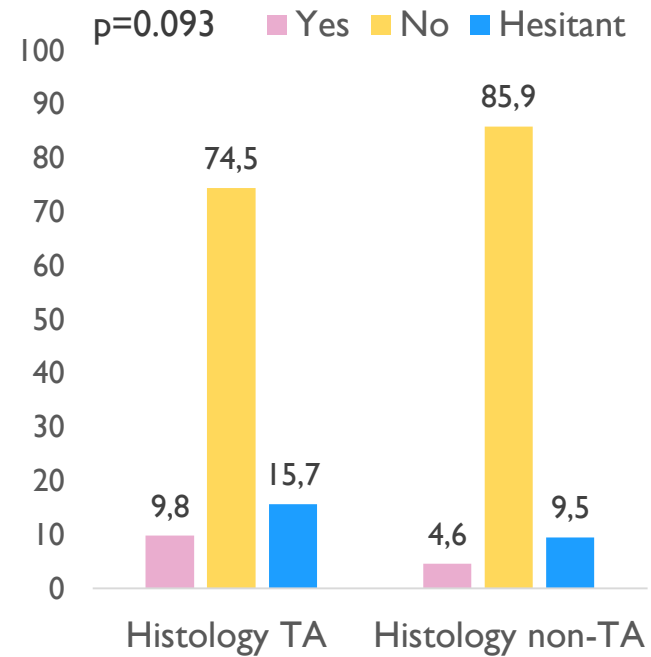
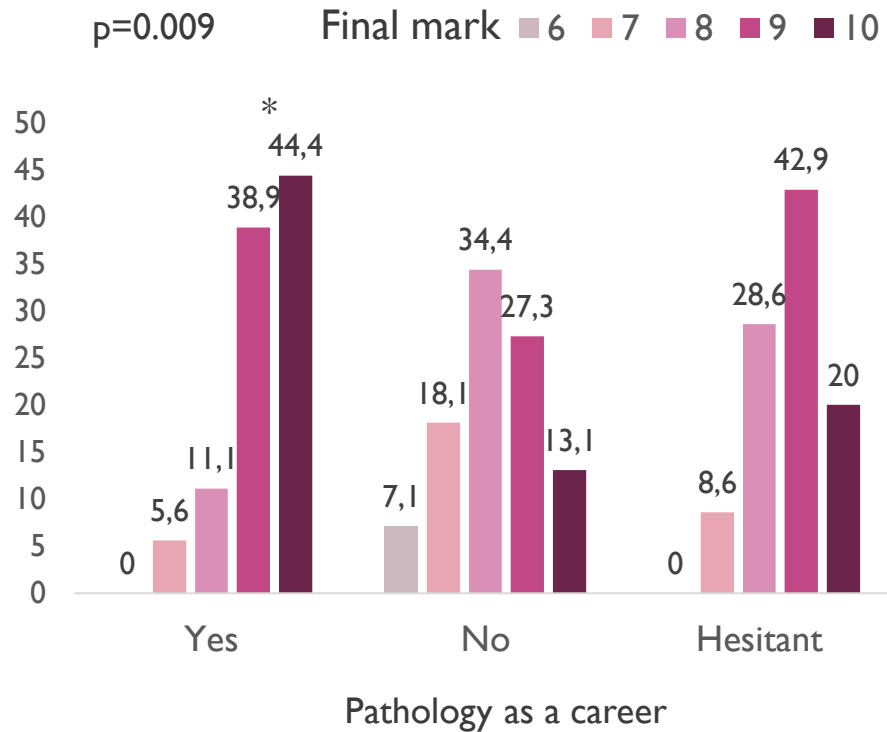
Marks or working as a teaching assistant don't influence the perception of our practice

# PATHOLOGY AS A CAREER?

## Interest in pathology is decreased by the end of medical school

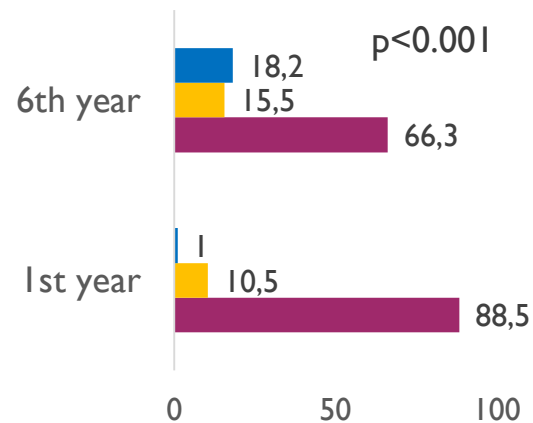


# Interest in pathology remains in students with higher final mark and pathology TA

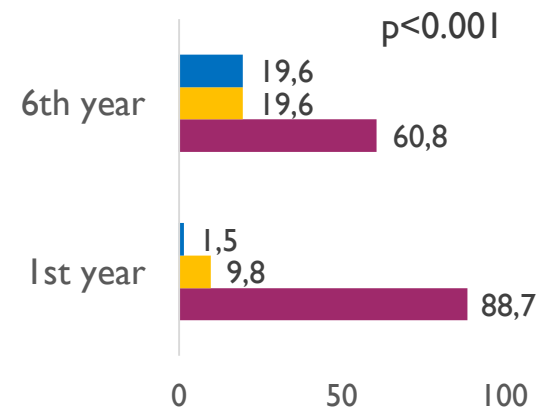


# Final year students consider pathology is less important in...

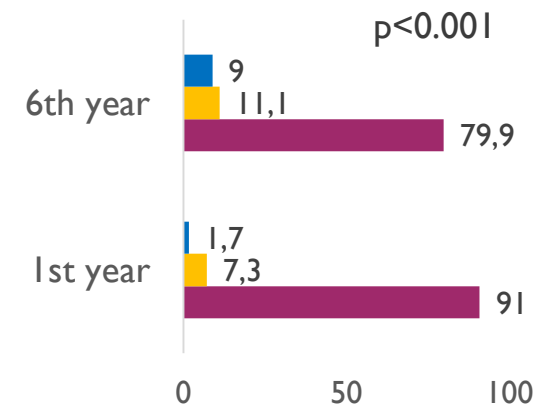
... further medical education



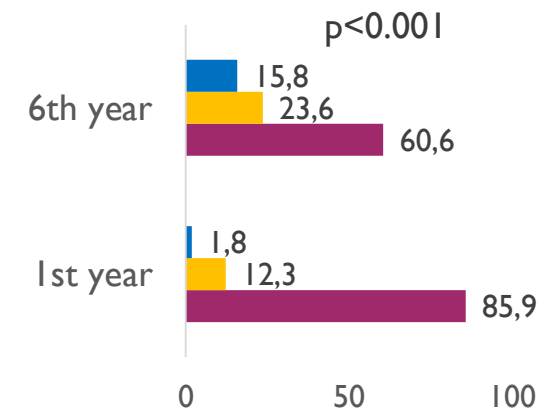
... medical practice



... diagnosis



... therapy

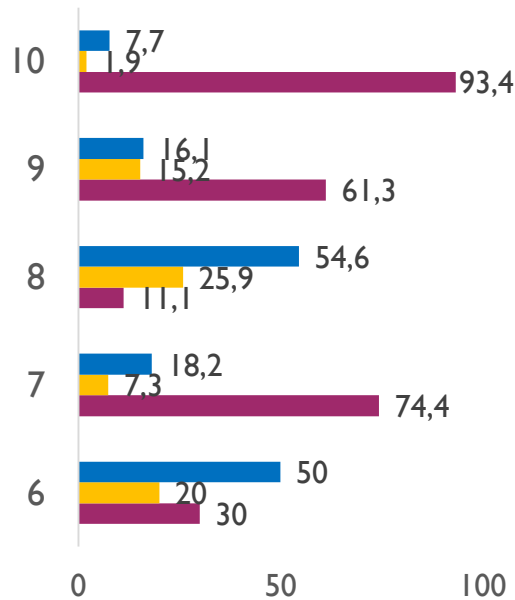


■ Don't agree  
■ Neutral  
■ Agree

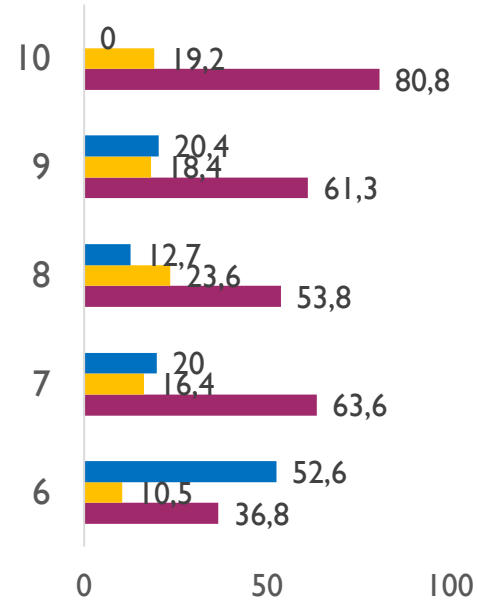


# DO GRADES MATTER IN PERCEPTION OF PATHOLOGY?

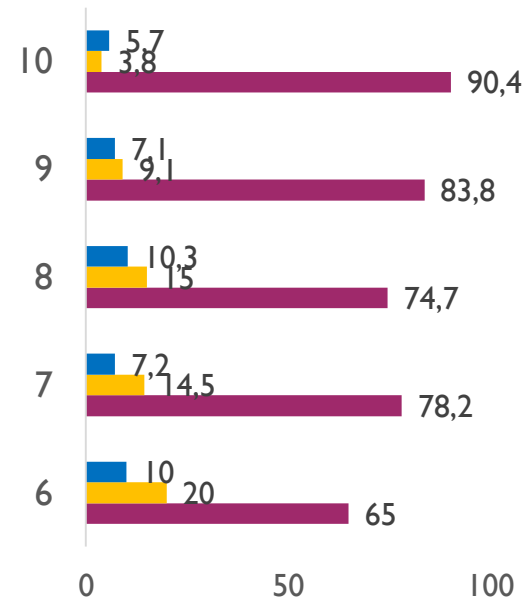
... further medical education



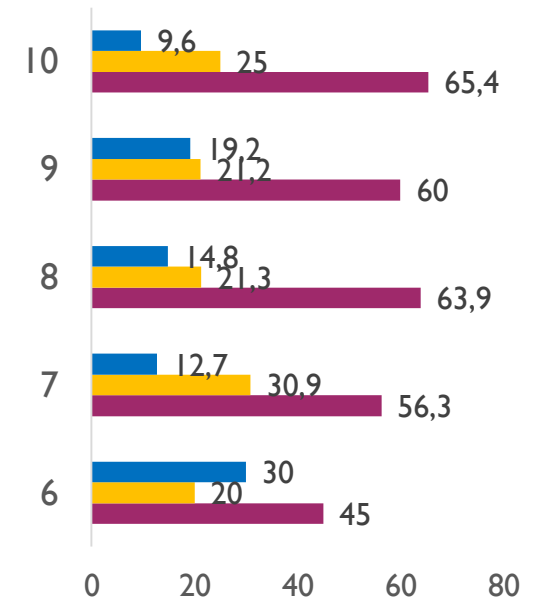
... medical practice



... diagnosis



... therapy



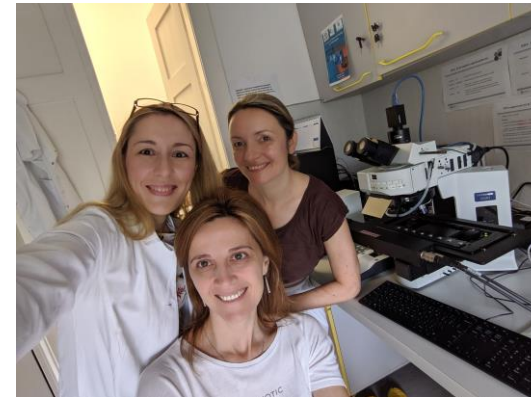
■ Don't agree ■ Neutral ■ Agree

# CONCLUSION

- Pathology inevitably becomes less attractive as students are exposed to clinical medicine
- Students are aware of our practices but not as much of its clinical value
- Better students can be recruited into pathology training
- Is the number of interested students enough for the future?

# THANK YOU FOR YOUR ATTENTION

Ivan Zaletel  
Jovan Jevtic  
Sanja Cirovic  
Marija Dencic Fekete  
Sanja Milenkovic



Department of Pathology  
Department of Histology and Embryology  
Department of Pharmacology