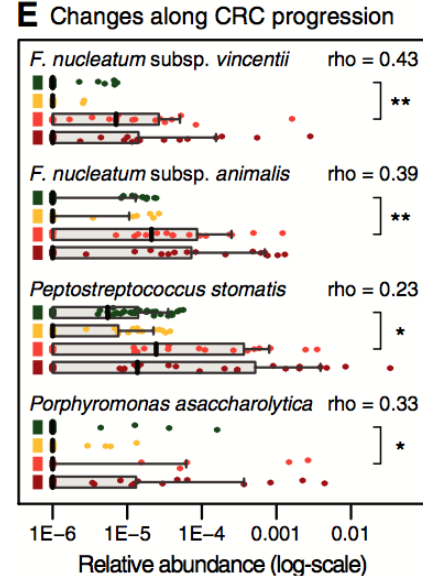
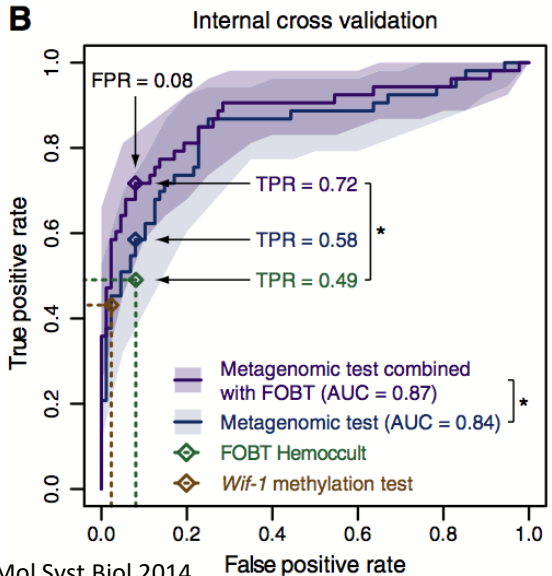
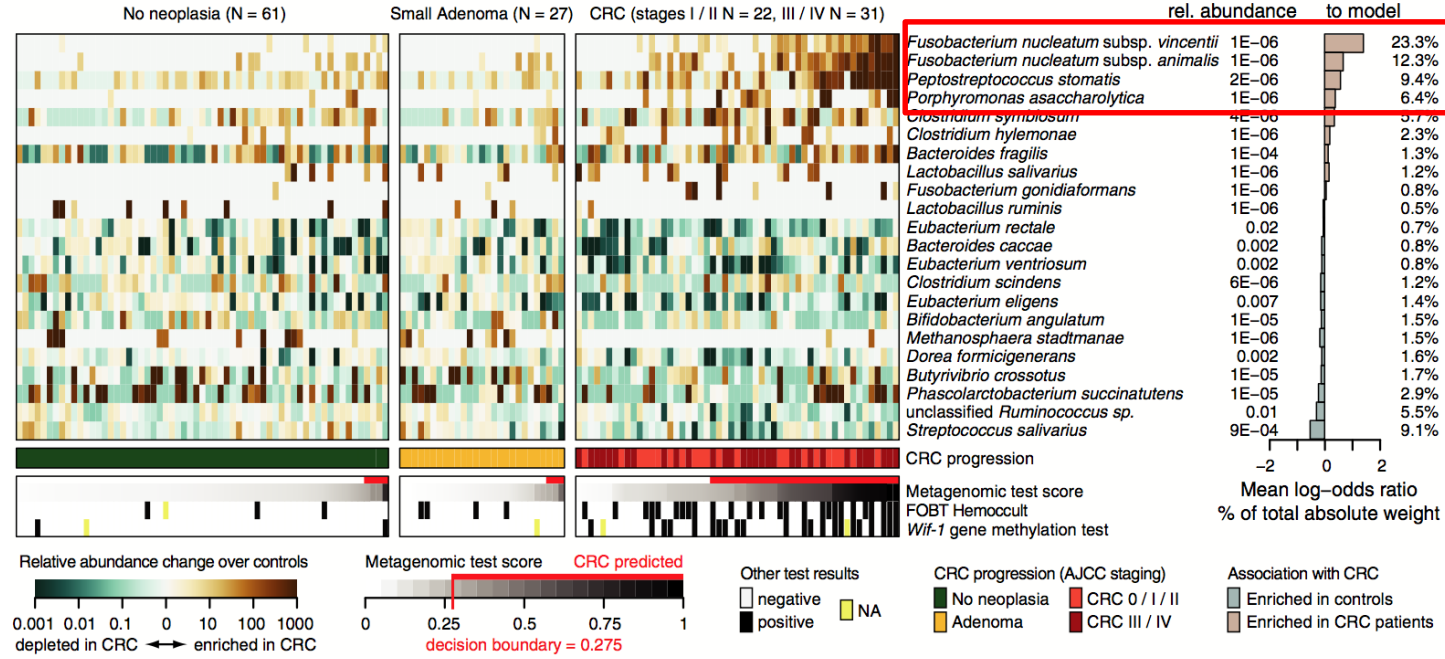




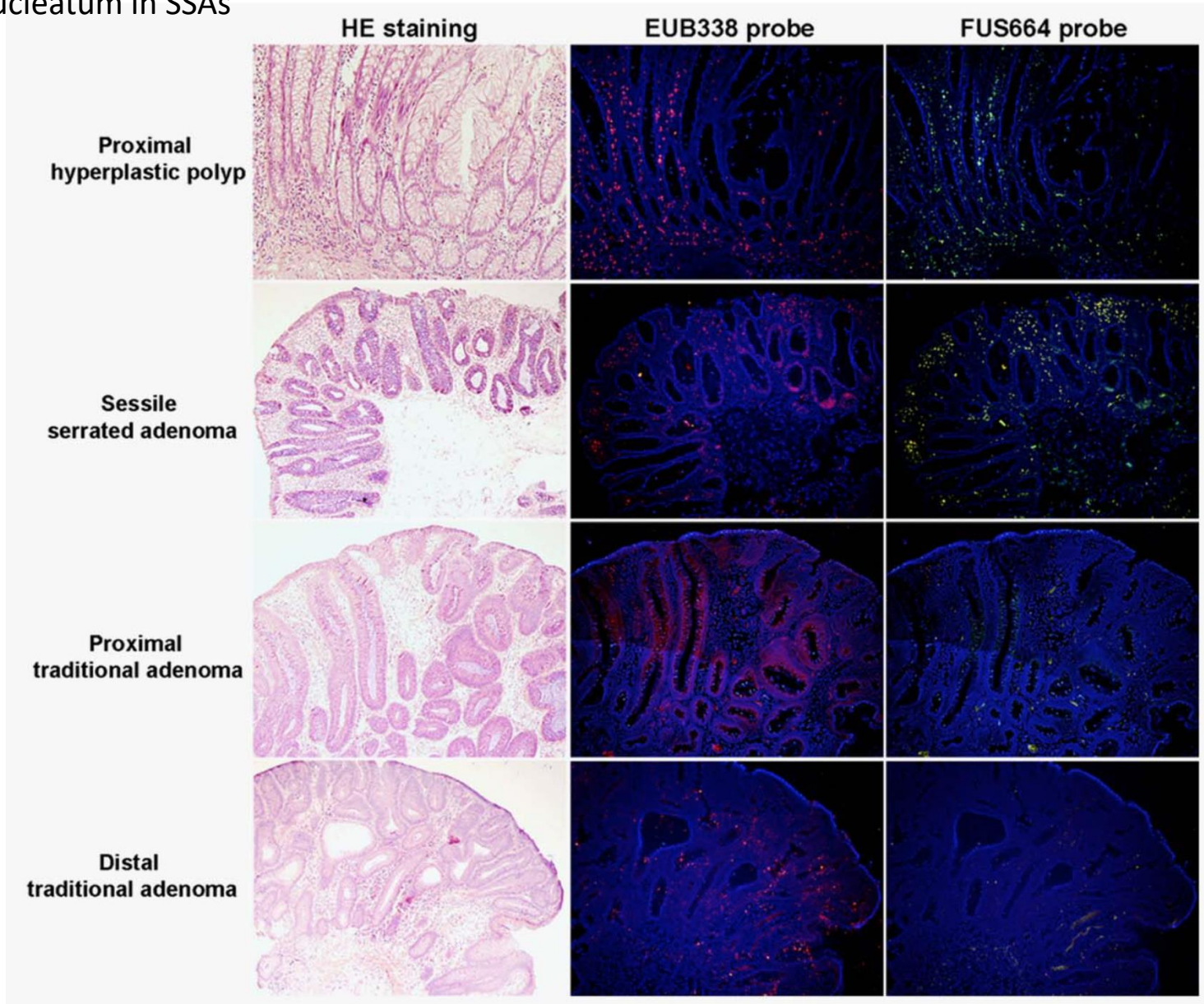
- Microbiota analysis is NGS based (available in pathology departments)
- Potential additional parameter for risk assessment/stratification (neoplasia, progression,...)
- Fecal microbiota linked to immune-checkpoint inhibitor therapy efficacy (treatment response)
- .....

## A Microbial signature for CRC classification

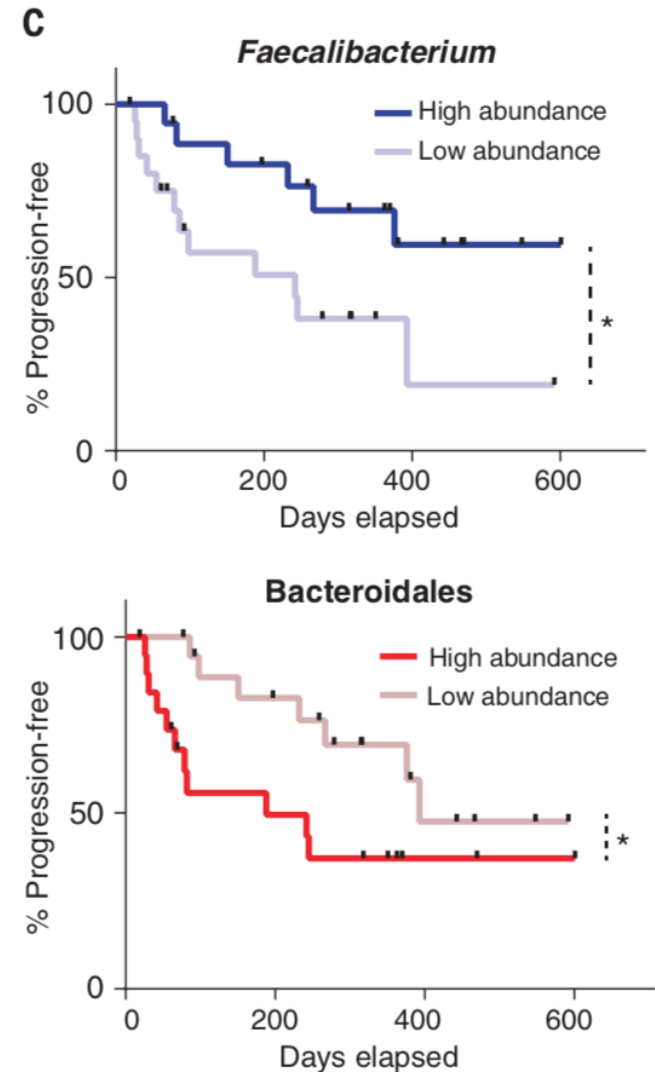
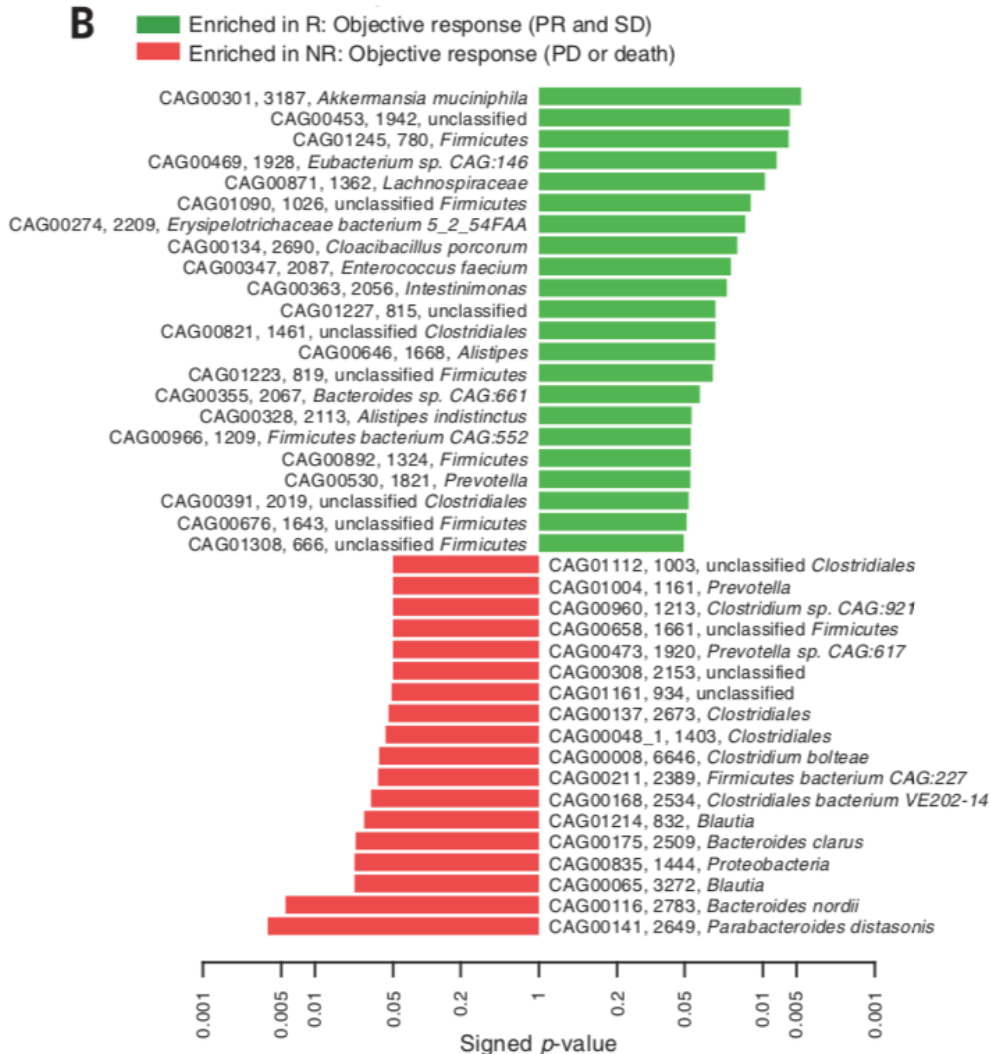


Metagenomic signature in adenomas & CRC higher sensitivity & specificity than hemocult (fecal occult blood) test for CRC detection

## F. nucleatum in SSAs



## Signatures of efficacy of immune checkpoint inhibitor therapy



Gut microbiome influences efficacy of PD-1–based immunotherapy against epithelial tumors. Routy et al., *Science* 359, 91–97 (2018)

Gut microbiome modulates response to anti–PD-1 immunotherapy in melanoma patients. Gopalakrishnan et al., *Science* 359, 97–103 (2018)